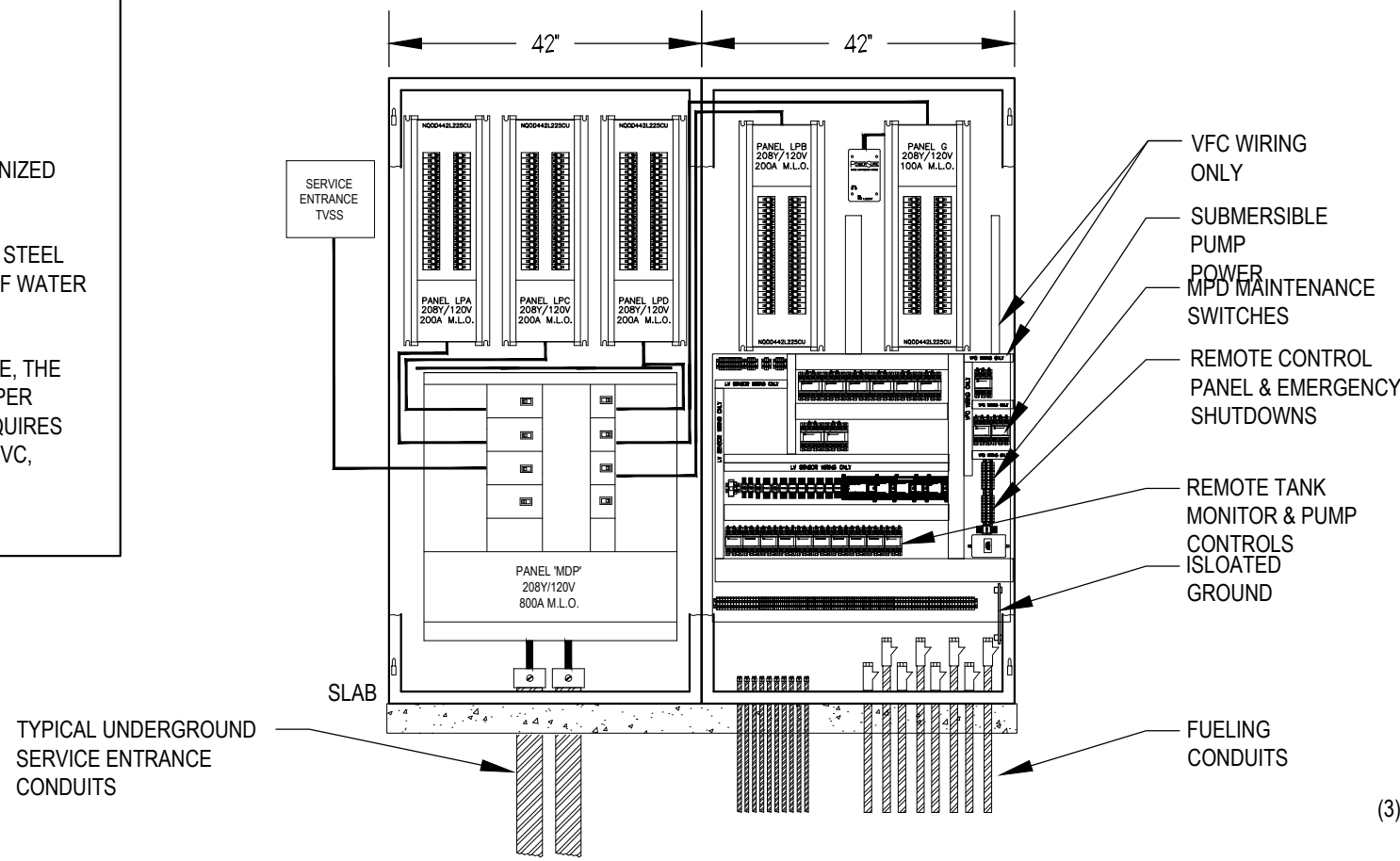


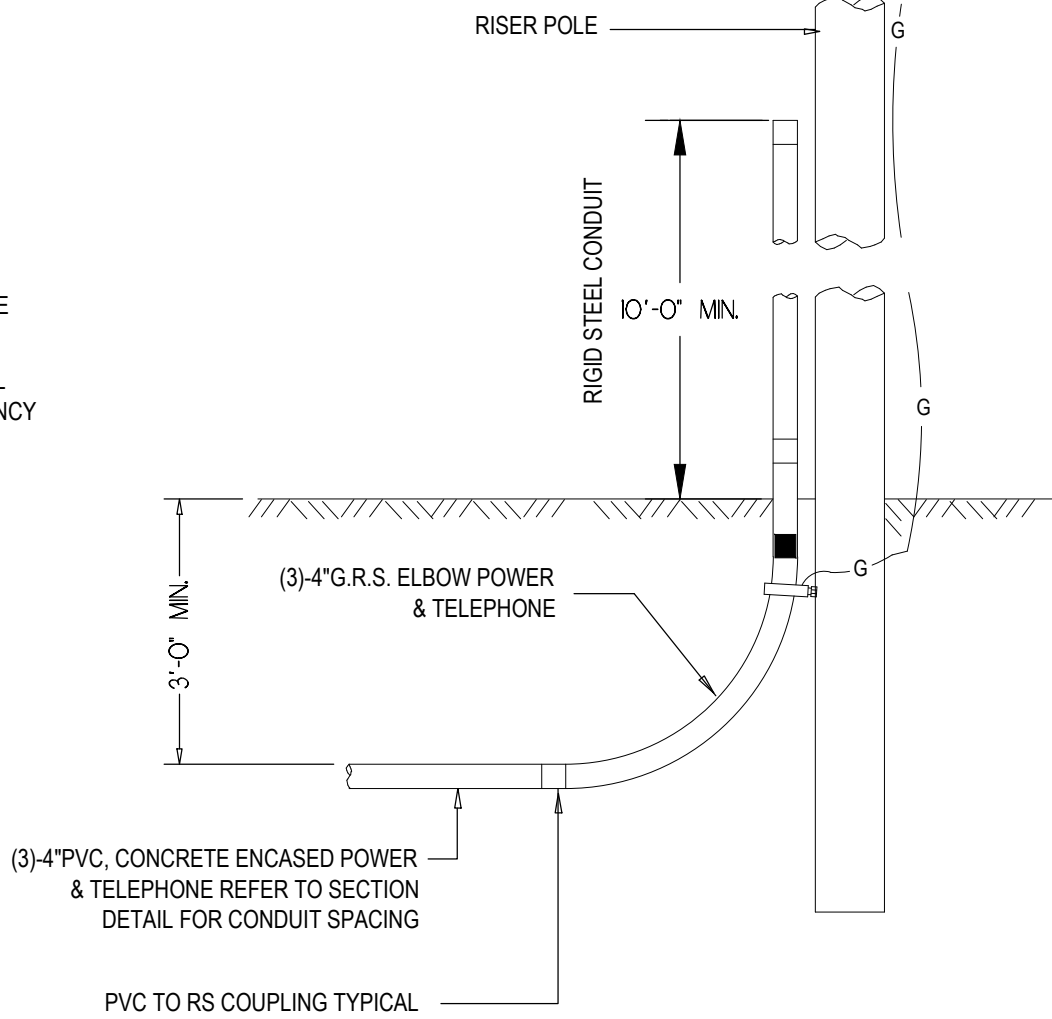
NOTES:

1. REFER TO DRAWING E1.2 FOR GENERAL NOTES AND LEGEND.
2. ALL PANELBOARD AND DISCONNECT EQUIPMENT SHALL BE MANUFACTURED BY SQUARE D, WESTINGHOUSE OR G.E.
3. ALL CONDUIT PENETRATION THROUGH THE SLAB SHALL BE GALVANIZED RIGID STEEL CONDUIT.
4. 1" PVC, (1#2/0 STRANDED TO 3/4" GROUND ROD 10', REINFORCING STEEL WITHIN ALL CONCRETE FOOTINGS, BUILDING STEEL & STREET SIDE OF WATER SERVICE.
5. IF THE LOCAL POWER COMPANY REQUIRES AN OVERHEAD SERVICE, THE CONTRACTOR SHALL PROVIDE 4" GRS SERVICE MAST INSTALLED AS PER POWER COMPANY SPECIFICATIONS. IF LOCAL POWER COMPANY REQUIRES AN UNDERGROUND SERVICE, THE CONTRACTOR SHALL PROVIDE 4" PVC, ENCASED IN CONCRETE AS SHOWN ON DETAILS THIS SHEET.



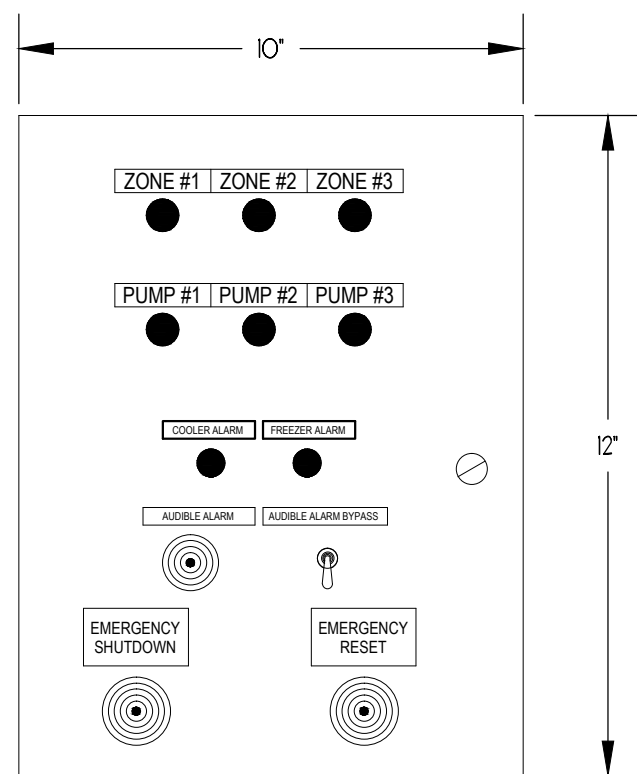
ELECTRICAL PANEL DETAIL

NOT TO SCALE



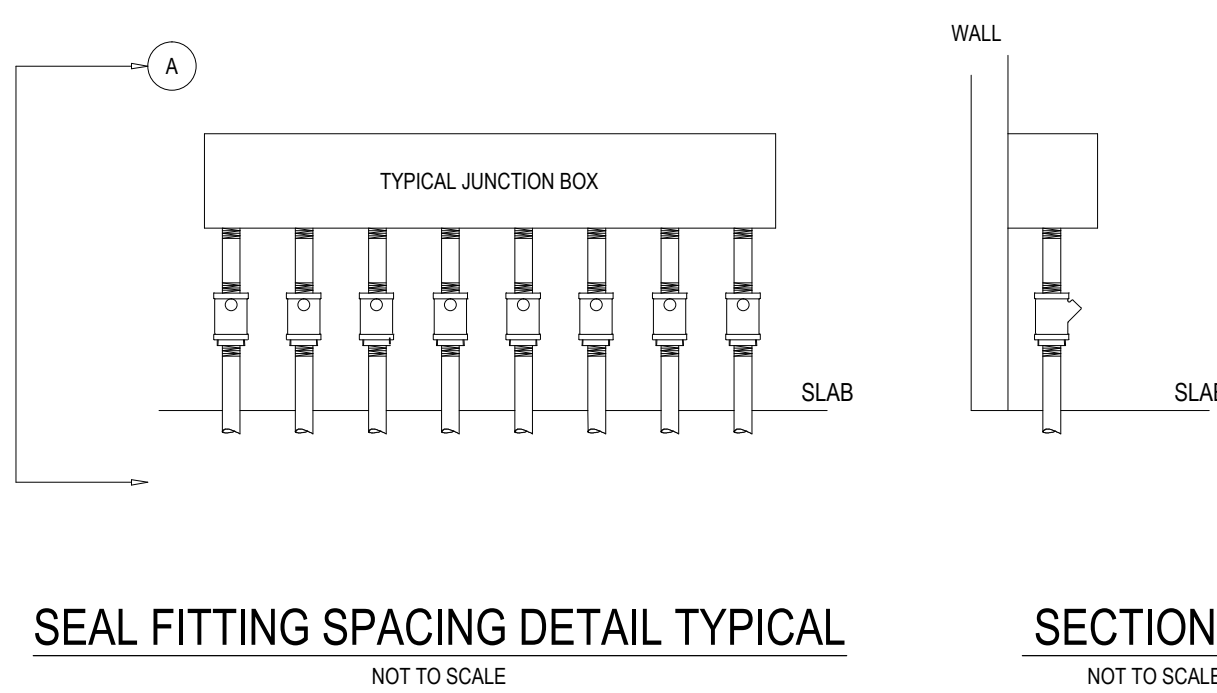
RISER POLE DETAIL

NOT TO SCALE



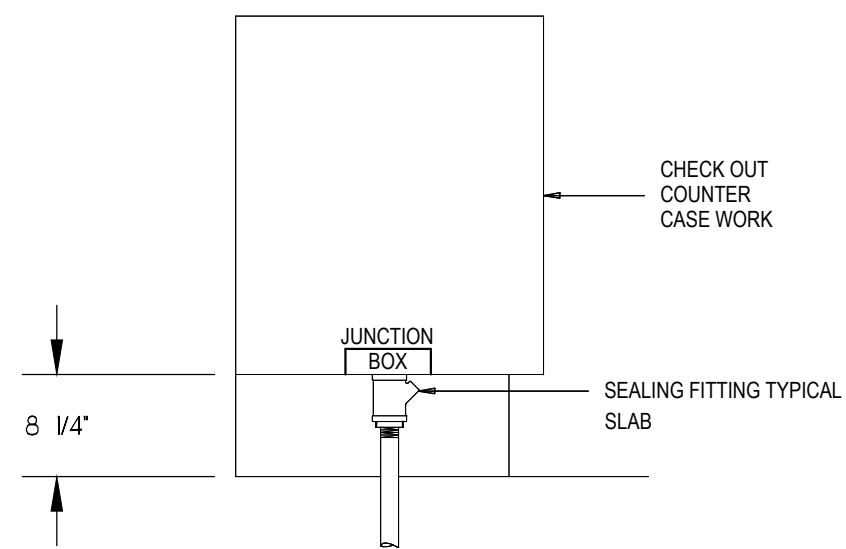
CASHIER CONTROL PANEL

NOT TO SCALE



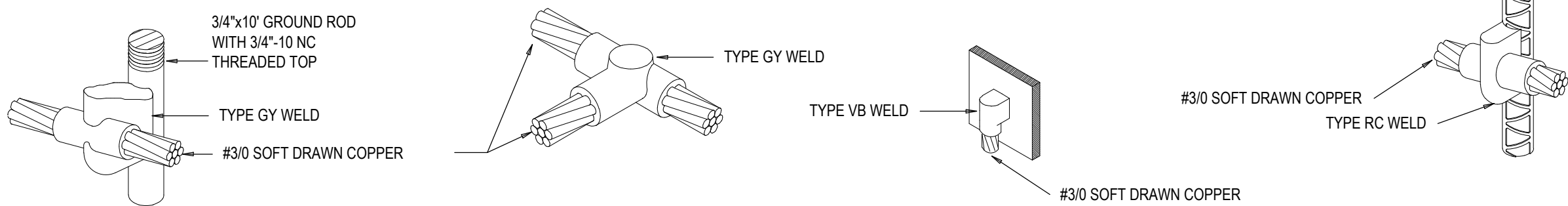
SEAL FITTING SPACING DETAIL TYPICAL

NOT TO SCALE



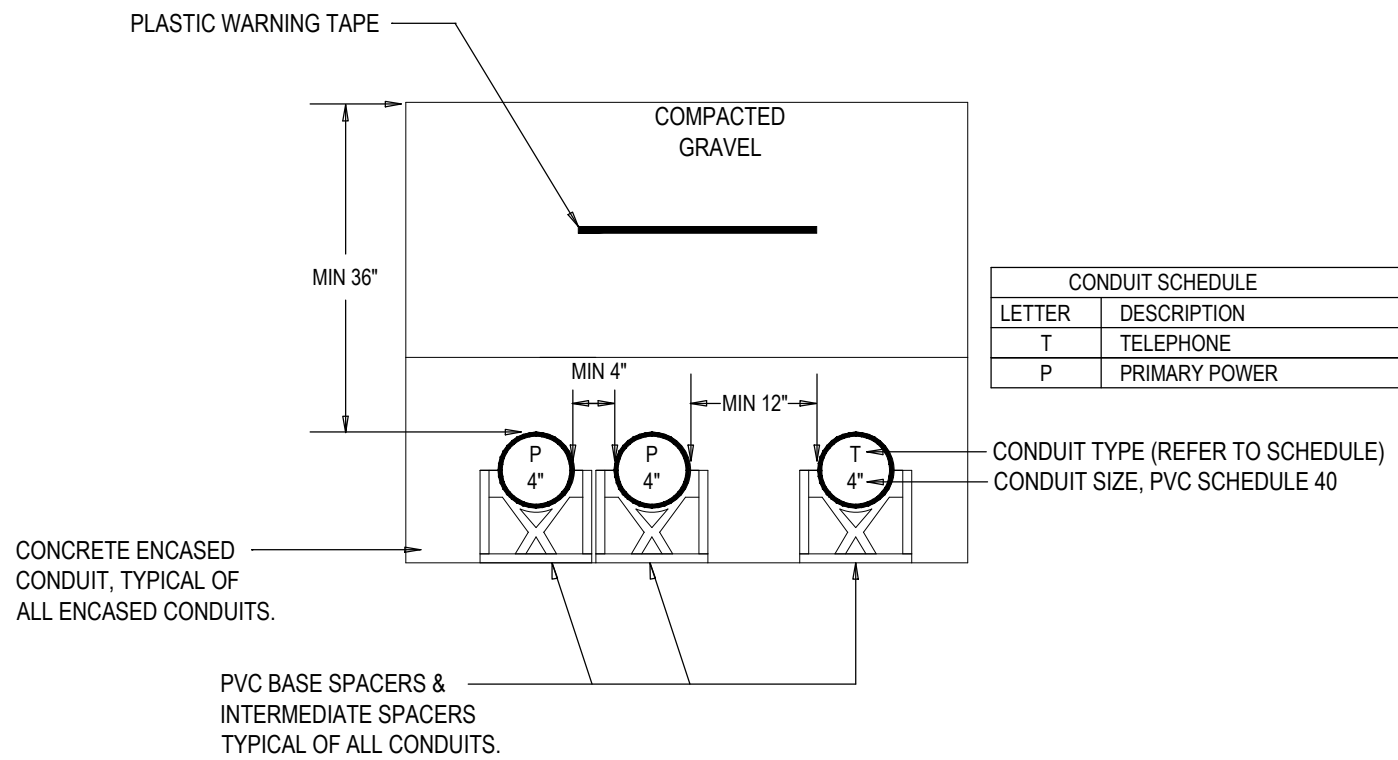
UNDER COUNTER CONDUIT PENETRATION

NOT TO SCALE



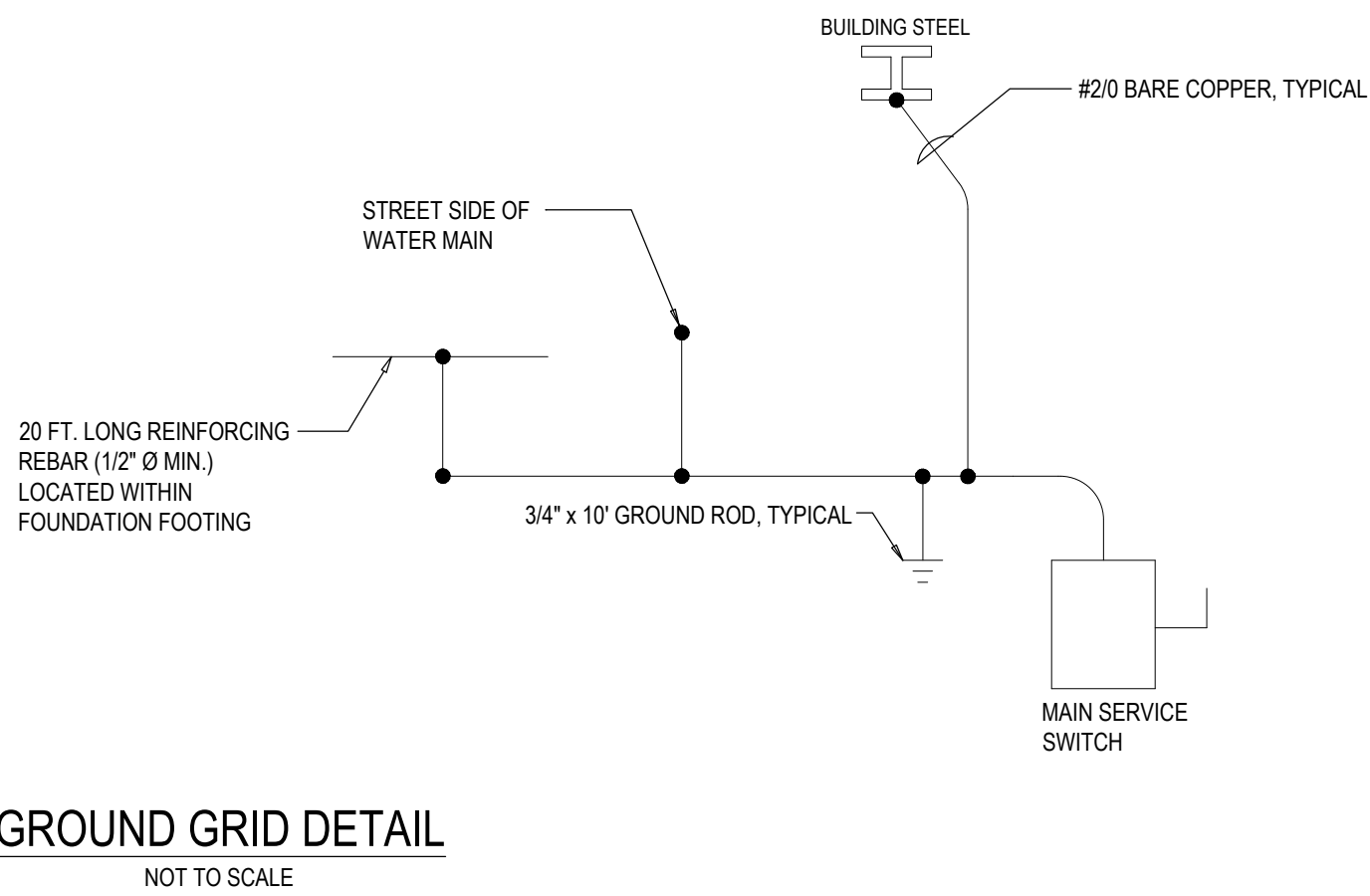
EXOTHERMIC WELD DETAILS TYPICAL

NOT TO SCALE



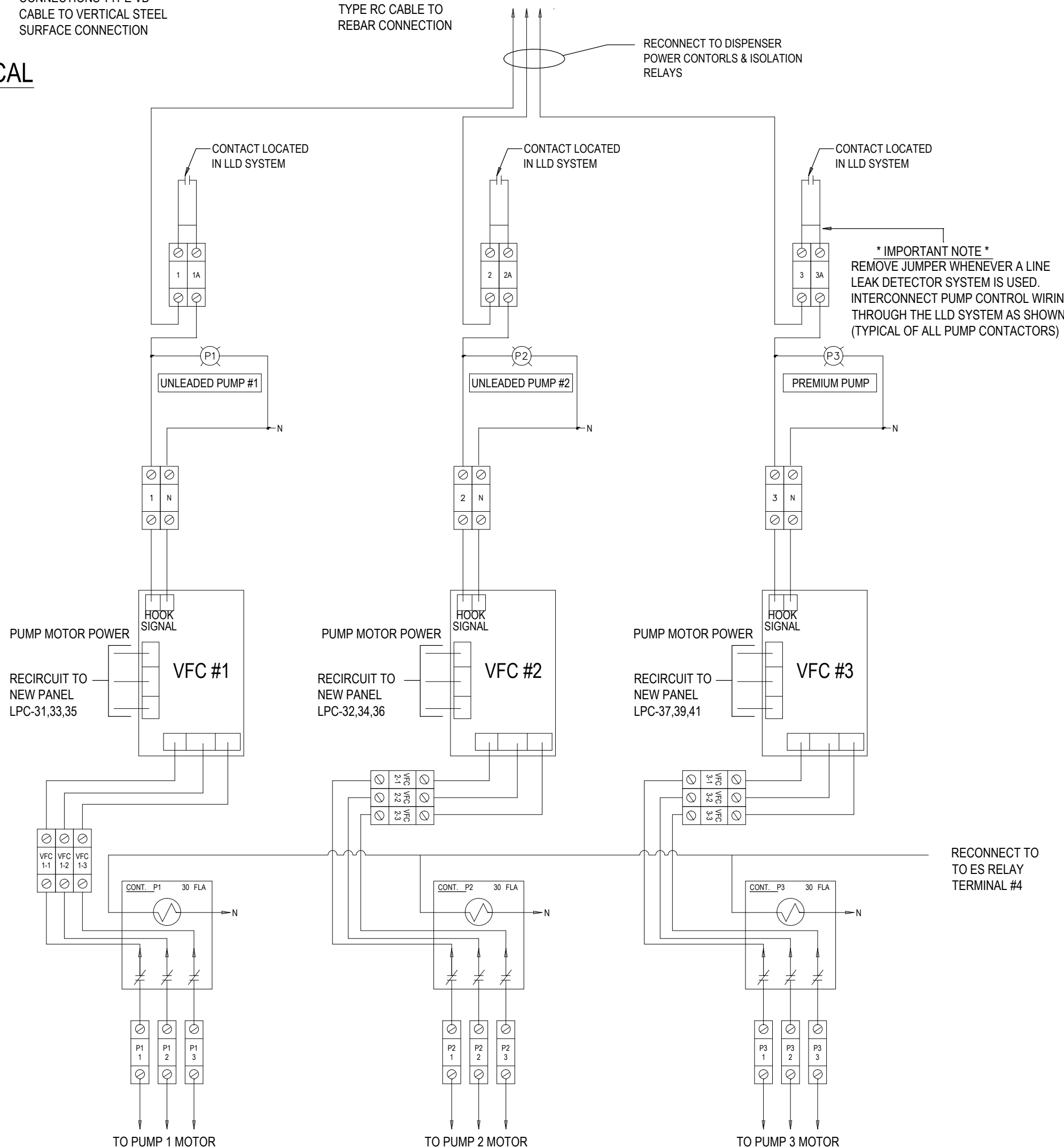
DETAIL - A - TYPICAL ARRANGEMENT OF UNDERGROUND DUCTBANK

NOT TO SCALE



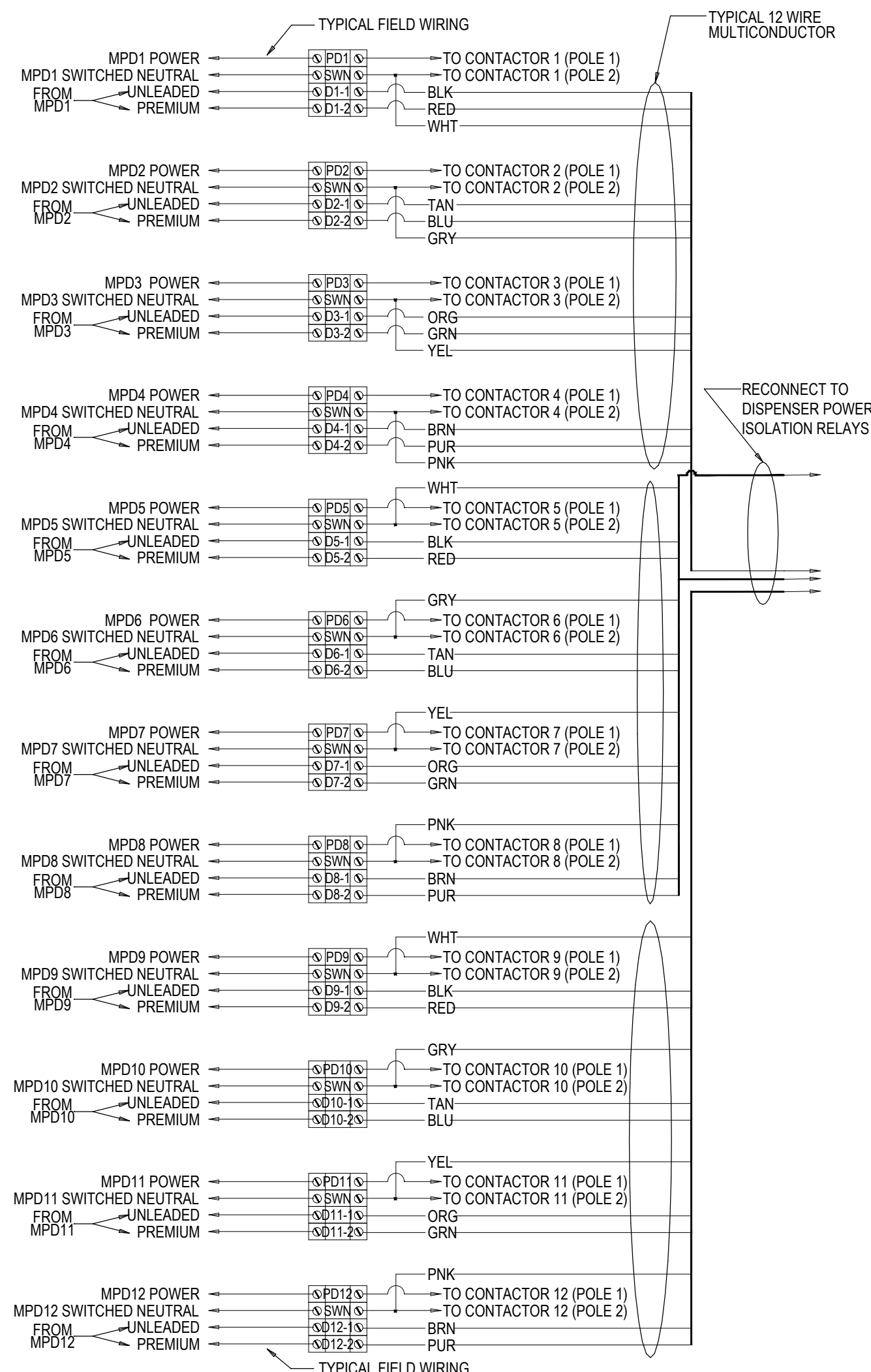
GROUND GRID DETAIL

NOT TO SCALE



SUBMERSIBLE PUMP HOOK WIRING DIAGRAM

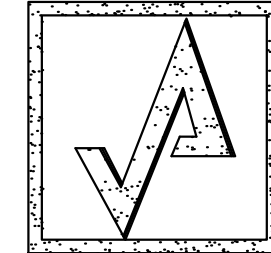
NOT TO SCALE



NOTE: RECONNECT TO NEW POWER AND CONTROLS

GAS DISPENSER POWER WIRING DIAGRAM

NOT TO SCALE



AHARONIAN
& ASSOCIATES INC.
ARCHITECTS

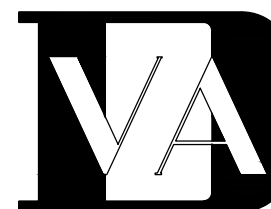
310 George Washington Highway
Suite 100
Smithfield, Rhode Island
0 2 9 1 7
T 401-232-5010
F 401-232-5080
WWW.ARCH-ENG.COM

DISCLAIMER

OWNERSHIP AND USE OF DOCUMENTS, DRAWINGS AND SPECIFICATIONS ARE INSTRUMENTS OF PROFESSIONAL SERVICE AND SHALL REMAIN THE PROPERTY OF THE ARCHITECT. THESE DOCUMENTS ARE NOT TO BE USED, IN WHOLE OR IN PART, FOR ANY OTHER PROJECTS OR PURPOSES OR BY ANY OTHER PARTIES THAN THOSE PROPERLY AUTHORIZED BY CONTRACT WITHOUT THE EXPRESS WRITTEN AUTHORIZATION OF THE ARCHITECT.

REVISIONS

NUMBER	REMARKS	DATE



VINCENT A. DIORIO, INC.
CONSULTING ENGINEERS
89 Access Road Suite Eighteen
Norwood, Massachusetts 02062
tel: (781) 255-9754 fax: (781) 255-9725 email: vadjr@vadeng.com
www.vadeng.com

FOR PERMIT ONLY

PROJECT TITLE

Cumberland
FARMS
100 Crossing Blvd, Framingham, Massachusetts

STORE #
V0636

22905 S.R. 7

BOCA RATON, FL
Palm Beach County

DRAWING TITLE

ELECTRICAL
DETAILS

DATE AUG 29, 2012	PROJ NO 11117
DRAWN BY DJH	CHECKED BY VAD JR

DRAWING NUMBER

E5.03